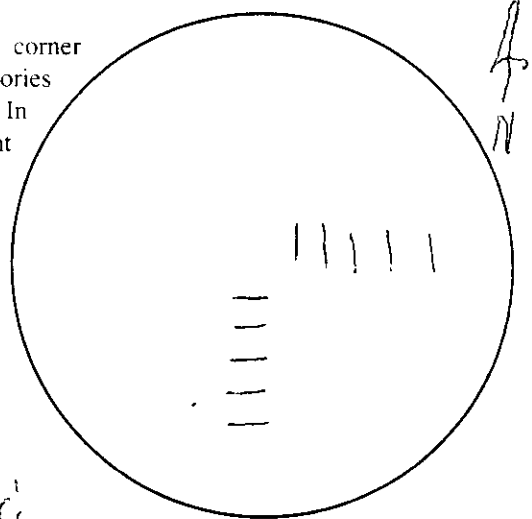


# Wyoming Certified Land Corner Recordation Certificate

*This form is to be completed in accordance with W.S. 36-11-101, printed in black ink or typed, and shall be for one individual corner.*

Describe below, or show in sketch attached to this form, the corner evidence found. Include condition and type of monument, accessories and ties. Describe any maintenance or rehabilitation performed. In the circle to the right, show monument inscription. If monument is determined lost or obliterated, restate the GLO or BLM original field note record; describe or show the procedure used to reestablish the corner and all data as above for a found monument.

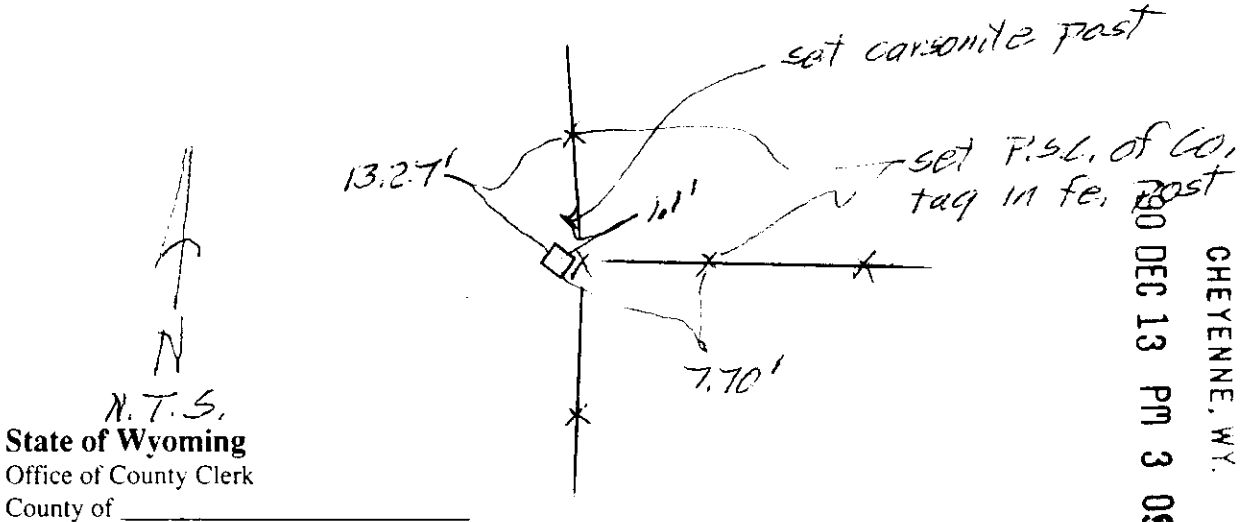


Field Date 8/16/90 Office Reference 8/20/90

GLO DESCRIPTION - SET granite boulder 25 x 14 x 8

FOUND 7" x 12" granite stone pres. 14" inscribed as shown above.

**Monument Inscription**



N.T.S.  
State of Wyoming  
Office of County Clerk  
County of \_\_\_\_\_

RECORDED  
 LARAMIE COUNTY  
 CHEYENNE, WY.  
 20 DEC 13 PM 3 09  
 078890

This Certified Land Corner Recordation Certificate was filed for record on the \_\_\_\_\_ day of \_\_\_\_\_, 19 \_\_, in Book No. T 13N, R 67W, on Alpha-Numeric coordinates E-5 and was noted on the Cross Index Plat.

*Janet C. Whitehead*  
County Clerk

Corner Type:  Aliquot Corner  Other  
 Section(s) 615 / 718 Meridian 6th  
 Corner Name \_\_\_\_\_ Township 13N Range 67W Page \_\_\_\_\_

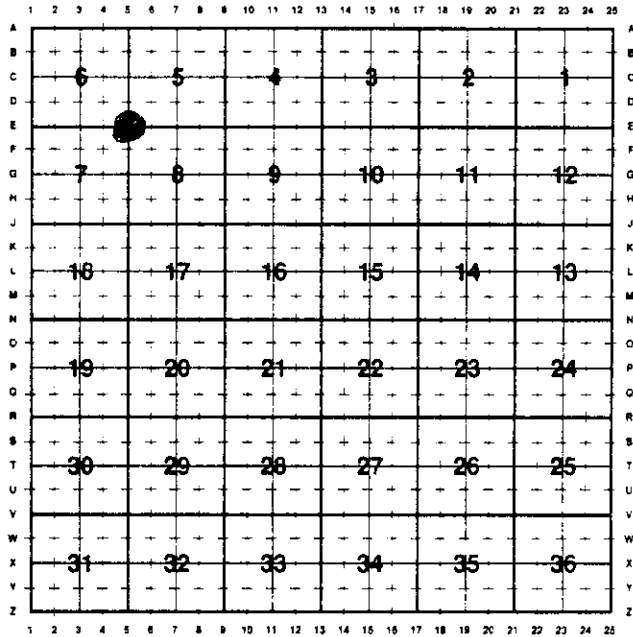
Sheet 1 of 2

**Directions for using the  
Cross Index Plat**

Section, quarter and sixteenth corners will be marked with a dot at the corner location. The alpha-numeric coordinate number is then determined for the intersection of the two lines. A corner that applies to two or more townships shall be filed under all that apply by the use of photo copies.

Closing corners will be indexed under the township in which they control ownership. For 1/64, 1/256, 1/1024 and non-aliquot corners lying between grid designations, mark the appropriate grid area with a dot and use the index code to the north and west (local systems may be used if the method is approved by the County Surveyor or Clerk and a written description of its use is filed in the front of each book of certificates).

**Cross Index Plat**



**State Plane Coordinates (optional)**

Zone            W    WC    EC    E            feet/meters

NAD 1927             NGVD 1929             NAD 1983             NAVD 1988

North (Y) = \_\_\_\_\_ East (X) = \_\_\_\_\_ EL = \_\_\_\_\_

Latitude \_\_\_\_\_ Longitude \_\_\_\_\_

Scale Factor \_\_\_\_\_ Geoid Height \_\_\_\_\_

**Certification**

I, Doyle G. Abrahamson, Wyoming PLS/PE PLS certify that I, or others under my supervision, have performed the work as described above and completed this form.

Company or Agency Merrick & Co.

Mailing Address \_\_\_\_\_

Street Address 10855 E. Bethany Drive

City, State, ZIP Avon, Co. 80014

Telephone, FAX 303-751-0741 FAX 751-2581

Sheet 2 of 2

